

**JETTER**  
UNIFLOW

Indoor Use Pipe-less Roll-up Door

**JETTER**

Automatic sheet recovery & Reverse ascending functions achieved



**UNIFLOW**

---

Further Ecology,  
Safety and  
Usability sought.

---

Indoor Use Pipe-less Roll-up Door

# JETTER

JT-1 Built-in control box

JT-1T External control box

JT-2T External control box

## JETTER, the Pipe-less Roll-up Door with Reverse Ascending and Automatic Sheet Recovery functions.

This Model detects objects contacted to descending sheet and makes Reverse Ascending. Even the sheet gets off the rails, it can be automatically returned to the right position. Safe Pipe-less design for less chances for damaging the sheet. The operational noise reduced as well.



Achieved space-saving and wiring-saving smart by the control board built in the sheet drum box.



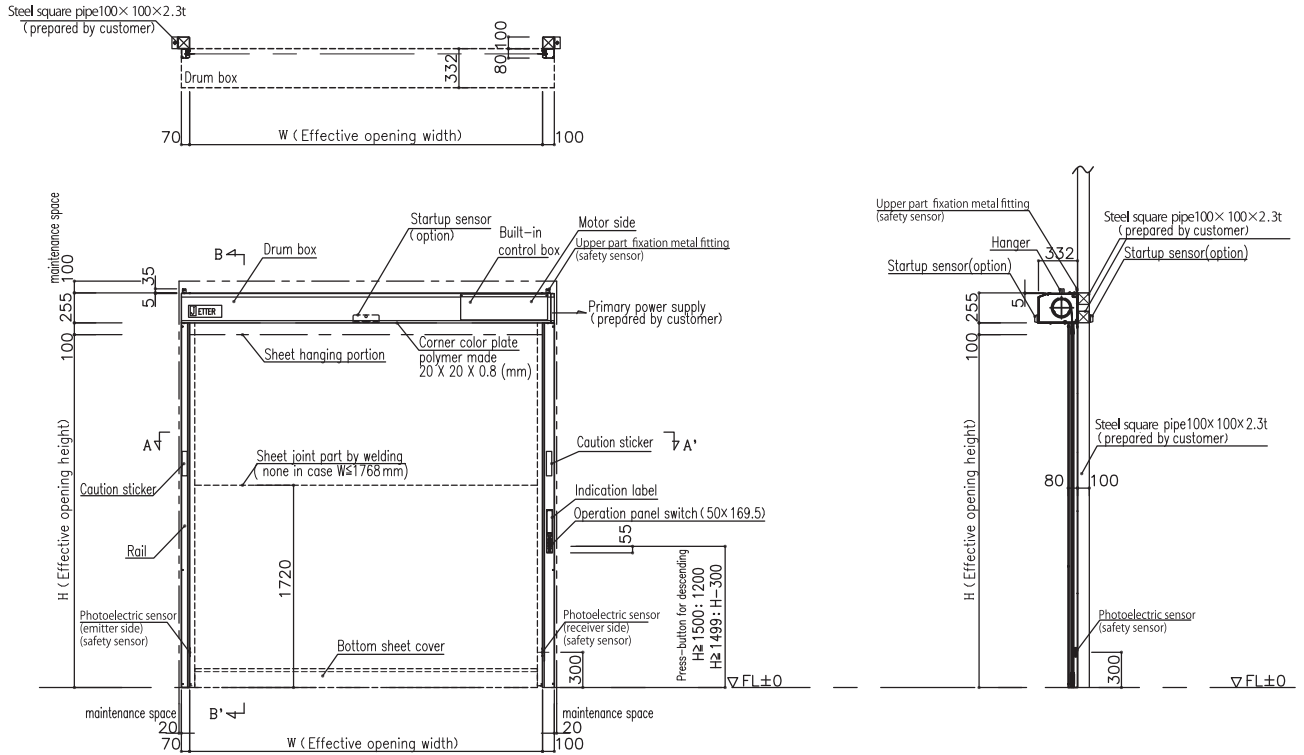
Model with the control board box installed outside. Choose according to conditions and environment for installation.



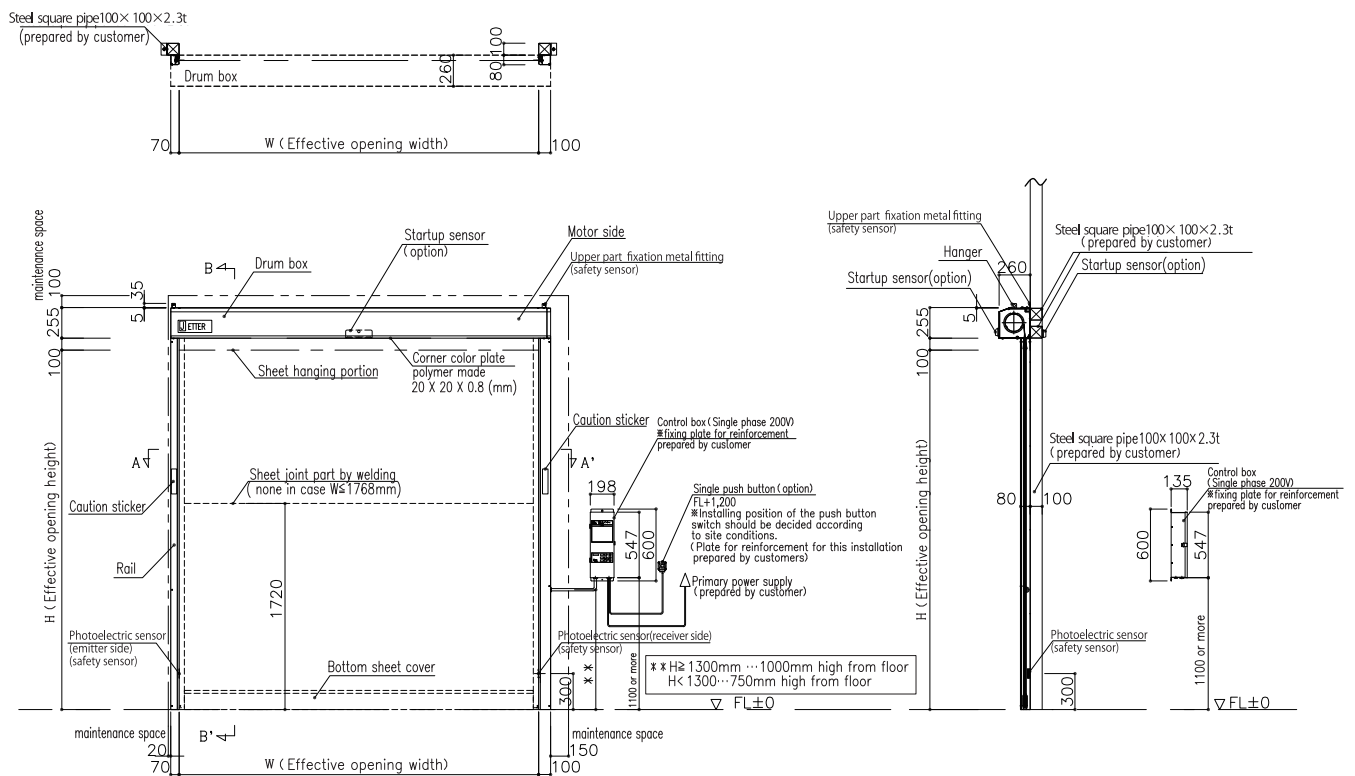
Possible to manufacture with the size up to 4500mm for both width and height freely, that enables to use for bigger opening.

# Dimension

## JT-1 Built-in control box

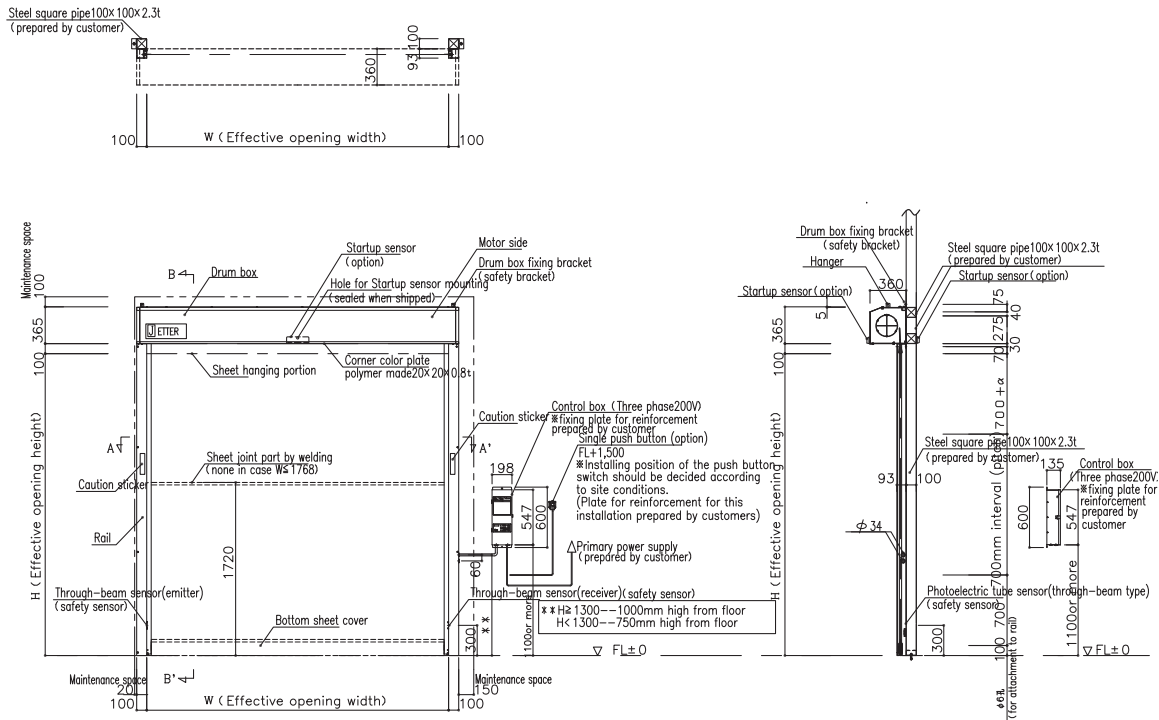


## JT-1T External control box



**JT-2T**

**External control box**



**Specifications**

Item	Model	JETTER		
		JT-1	JT-1T	JT-2T
		<b>Pipe-less 【Indoor Use】</b>		
Main body	Effective opening regulation W/H (mm)	W800~3500 ※1		W1000~4500
		H900~3000		H 1000~4500
	Control box	【Built-in】 D332xH255	【External】 D260xH255	【External】 D360xH365
	Rail	W70 (left) · 100 (right) xD80		W100xD93
	Maintenance space	left20 right20 Above drum box100	left20 right150 Above drum box100	
Drive/Control	Motor Output	0.4kW		0.75kW
	Location of control board	Inside drum box	To be externally installed	
	Sheet speed ※2	Ascending 2.0m/sec	Descending 1.5m/sec	Ascending 1.5m/sec Descending 0.7m/sec
	Allowable frequency	150times/h or less		
	Power supply	Single phase 200V±10% (50/60Hz)		Three phase 200V±10% (50/60Hz)
		6A or below		
Sheet	Sheet	Polyester yarn encapsuled vinyl sheet		
Other features	Safety sensor	Phototube sensor (Photo transmitting / photo receiving type)		
Ambient temperature / humidity		5~40℃ / 20~85%(There should be no freezing or condensation)		

※1 When the size of JT-1 is 800 ≤ W < 900, a startup sensor is not attached to a regular position. It is attached to a cover of control box.

※2 Maximum speed



## Distinctive Features of JETTER

### 1 Automatic Sheet Recovery

JT-1 JT-1T JT-2T

Even the sheet gets off the rails, it can be automatically returned to the rails when the sheet ascending and returns to normal operation.



### 2 Reverse Ascending

JT-1 JT-1T JT-2T

In case the descending sheet contacts an object or a person, it reverses and ascends. This action contributes to reduction of impact to the object or the person.



### 3 Easy emergency evacuation

JT-1 JT-1T JT-2T

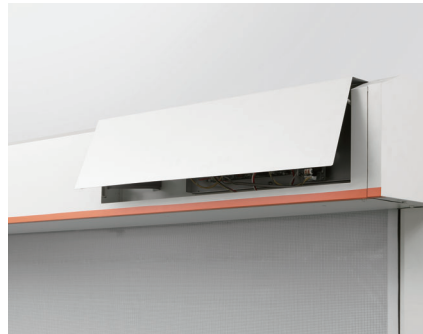
The sheet can be easily removed from the rail for immediate evacuation in the case of emergency.



### 4 Compact design for effective space use

JT-1 JT-1T

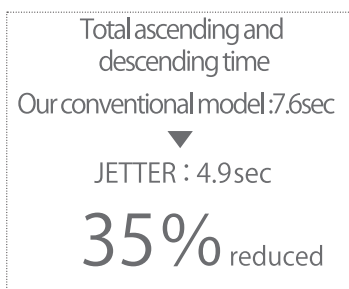
With the compact sheet drum box, this design offers maximized use of effective opening dimensions even in the limited space. This model is recommended for entrances of factories, shops and warehouses. By putting control board inside the drum box and by placing control panel, safety sensor inside the rail, drastic reduction in installation space and wiring achieved. (only the model JT-1 in built-in type)



### 5 High-speed ascending and descending

JT-1 JT-1T

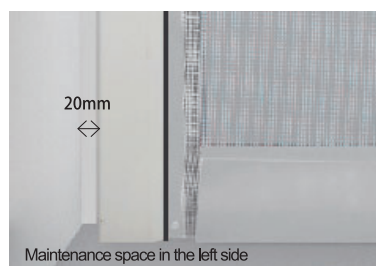
By improving "Slow-Start & Slow-Stop" function, the total time needed for opening and closing shortened by 35%.



### 6 Maximum opening dimensions can be secured

JT-1 JT-1T JT-2T

Minimized the maintenance space to be able to largely get opening more, as 20mm each in the left and right side for the model JT-1 and 20mm in the left/150mm in the right for the models JT-1T & JT-2T.



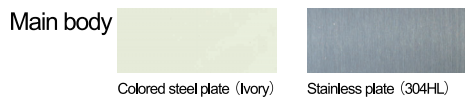
### 7 High Air tightness

JT-1 JT-1T JT-2T

Air leak volume at 10Pa (m<sup>3</sup>/h · m<sup>2</sup>)  
With High Airtight Option

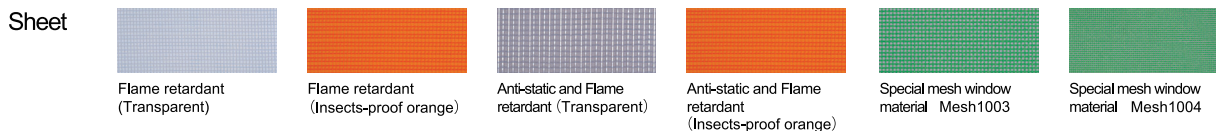


※ In case the opening dimension of W3000mm X H3000mm



Colored steel plate (Ivory)

Stainless plate (304HL)



Flame retardant (Transparent)

Flame retardant (Insects-proof orange)







Anti-static and Flame retardant (Transparent)

Anti-static and Flame retardant (Insects-proof orange)

Special mesh window material Mesh1003

Special mesh window material Mesh1004

Option

Sensors	Infrared Sensor	Infrared Sensor	Infrared Sensor	Switches	Wireless remote control (1-key type / 3-key type)	String Switch	Single pushbutton
							
Models	SHA-4701	OA-3500S	OA-4700S	Models	Receiver:RX13-1143 Transmitter:TX20-1011UF	—	WBSTT 221 ON
Outside dimension (mm)	W265×H61×D37.5	W267×H61×D38	W267×H62×D45	Outside dimension (mm)	W36×H80×D12.3 (Transmitter)	W140×H154×D33 (Main Body)	W60×H98×D47.5
Power supply	AC/DC12~24V	AC/DC12~24V	AC/DC12~24V	Power supply	DC12~24V	—	—

Others

- Backup power system
- Dormer-window
- Orange color bottom sheet
- HACCP cover
- Motor on the left (JT-1T, JT-2T)
- Airtight gasket

※In case of the effective width in W 4300mm or more, the sheet hanging dimensions in the center part and both end parts may differ.  
 ※ Notice: Keep the door (sheet) open when the unit is not in use. Sheet might be off the rails due to rapid wind.

**UNIFLOW**

Uniflow International Pte.Ltd.

81, Ubi Avenue 4, #07-07 UB. One, Singapore 408830

TEL:+65-6536-3239

URL <https://www.uniflow.co.jp/en/>